

State of Wyoming Corner Record

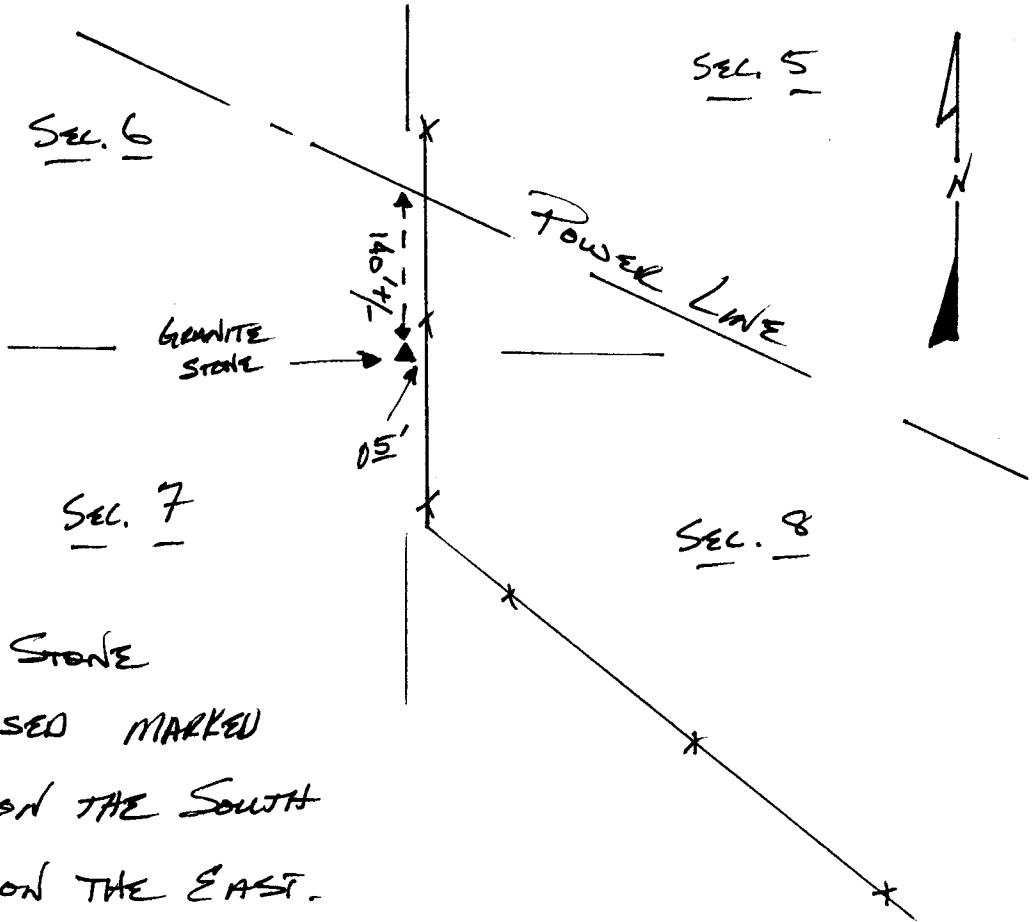
(In compliance with the *CORNER PERPETUATION AND FILING ACT*, Wyoming Statutes, 1977, Section 36-11-101, et. seq., and the Rules and Regulations of the Board of Registration for Professional Engineers and Professional Land Surveyors)

Reverse side of this form may be used if more space is needed.

Record of original survey and citation of source of historical information (if corner is lost or obliterated). Description of corner monumentation evidence found and/or monument and accessories established to perpetuate the location of this corner. Sketch of relative location of monument, accessories, and reference points with course and distance to adjacent corner(s) (if determined in this survey). Method and rationale for reestablishment of lost or obliterated corner.

140066
 RECEIVED
 LARAMIE COUNTY
 CHEYENNE, WY.

'94 APR 11 PM 9 10

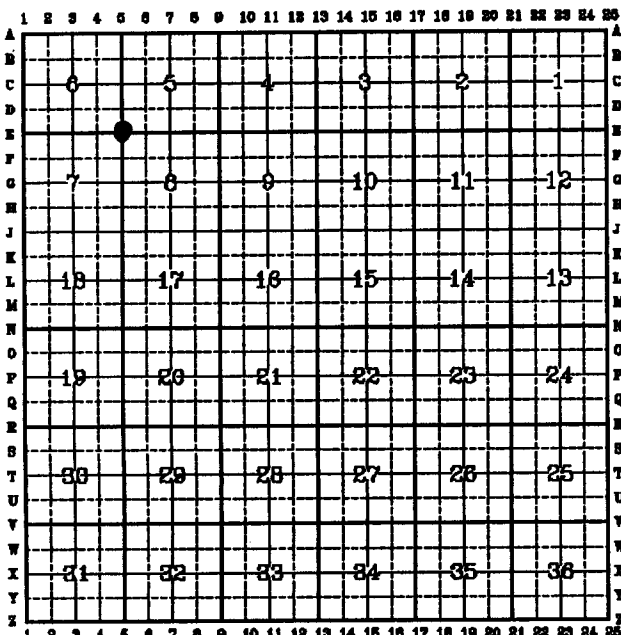


FOUND GRANITE STONE
 5" x 7" x 6" EXPOSED MARKED
 W/ 5 NOTCHES ON THE SOUTH
 AND 5 NOTCHES ON THE EAST.

GLO RECORD: GRANITE 16" x 8" x 6"

Date of Field Work: 4/5/94 Office Reference: 2717

CROSS INDEX DIAGRAM



Firm/Agency, Address

Intermarket Pro. Serv.
5801 Osage
Cheyenne, WY 82009

Telephone Number: 307 252-3130

This corner record was prepared by me or under my direction and supervision.

SEAL & SIGNATURE



Corner Name: Section Center Section: 5, 6 T 18 R 62; 6TH P.M. Cross-Index No.: E-5

BOOK **1370**

7, 8

1527